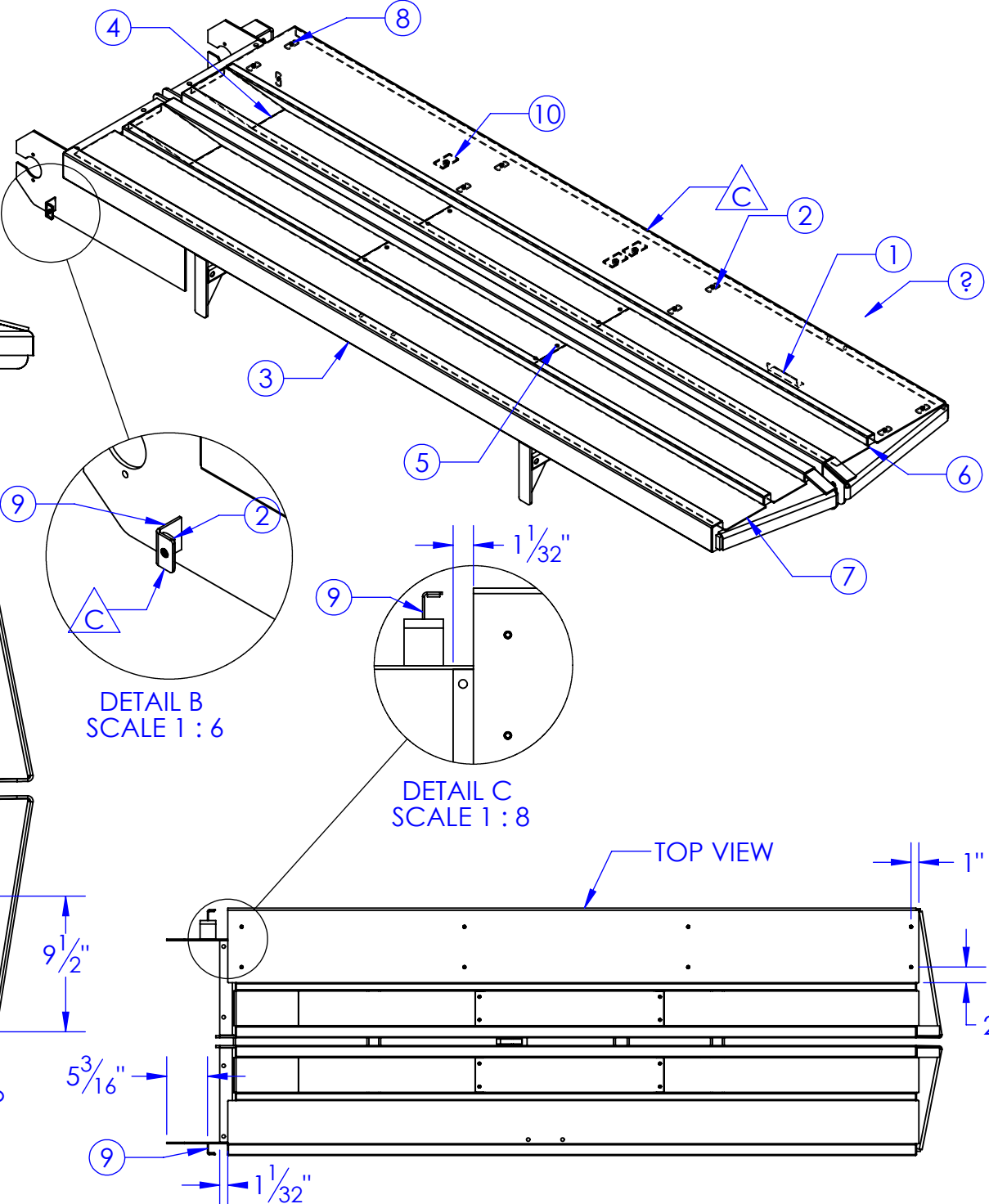
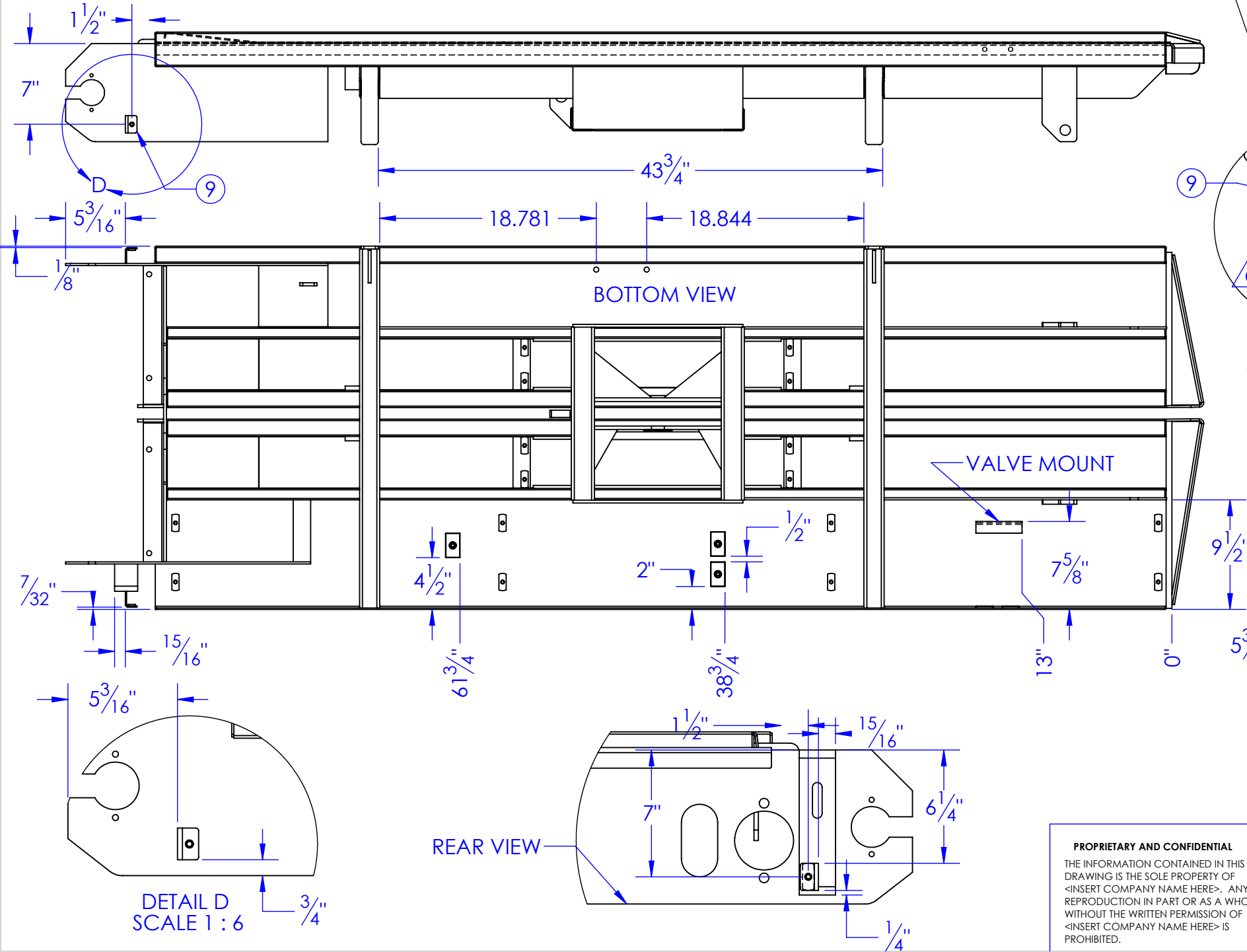



ITEM NO.	PART NUMBER	DESCRIPTION	MATERIAL	DRAWING #	QTY.
1	AI 1 x 1 L 4	LENGTH: 4"	AI 1x1x1/8	STOCK	1
2	BO-WO 5/16	WELD NUT W/ CENTER PILOT	5/16"-18	STOCK	12
3	FP-HFL-260	SUBFLOOR, HYDRA FLKR, SUBASSEMBLY		40-1203	1
4	FP-HFL-615	PLATFORM COVER SHIELD, RAMP	12ga HRS.	40-2214	2
5	FP-HFL-616	PLATFORM COVER, CENTER DOOR	12ga HRS.	40-2210	2
6	FP-HFL-617	PLATFORM COVER, CENTER, PUSHER END	12ga HRS.	40-2212	2
7	FP-HFL-618	PLATFORM COVER, REAR, HFL.	12ga HRS.	40-2213	1
8	FP-HFL-626	PLATFORM COVER, CENTER DOOR	10ga HRS.	40-2209	1
9	FP-HFL-630	SHIELD MOUNTS, FRONT	10ga HRS.	40-2216	2
10	HD-CL-TW375WP	WELD PLATE, 6M3K		STOCK	3
11	BO-1/4X3/4 HCS	BOLT 1/4 x 3/4 HCS		STOCK	2

REV.	REVISIONS DESCRIPTION	DATE	APPROVED
B	UPDATED TO MATCH 3D MODEL	2/10/2012	
C	REMOVED HFL-629,632 & REPLACED HFL-630 FOR HFL-631	9/17/2012	
D	REVISED ITEM #11 PART NUMBER DESCRIPTION FROM BOLT 1/4 x 1 HCS TO BOLT 1/4 x 3/4 HCS	2/27/2023	KD (BB)



PROPRIETARY AND CONFIDENTIAL
THE INFORMATION CONTAINED IN THIS DRAWING IS THE SOLE PROPERTY OF <INSERT COMPANY NAME HERE>. ANY REPRODUCTION IN PART OR AS A WHOLE WITHOUT THE WRITTEN PERMISSION OF <INSERT COMPANY NAME HERE> IS PROHIBITED.

UNLESS OTHERWISE SPECIFIED:
DIMENSIONS ARE IN INCHES
TOLERANCES:
FRACTIONAL ±1/16
ANGULAR: MACH ±1 BEND ±1
TWO PLACE DECIMAL ±0.01
THREE PLACE DECIMAL ±0.005
MATERIAL
DO NOT SCALE DRAWING

DRAWN	NAME	DATE	P.O. BOX 248, SABETHA KS. 66534 (785) 284-3674 FAX (785) 284-3931	
PART #	HEATH	2/27/2023		
ASM #	--	FP-HFL-258		
COMMENTS:	COVER, HYDRA FLKR, SUBASSEMBLY		SIZE	REV
			B	D
			DWG. NO.	
			40-1204 D	
			SCALE: 1:1	WEIGHT: 288.21
			SHEET 1 OF 1	